

STATE WHEN ORDERING

FW/CL = mm
 FH = mm
 COW = mm
 COH = mm

Surface treatment

☐ Silver anodized
 Special anodized
 RAL
 Special powder coating

Options see layers:

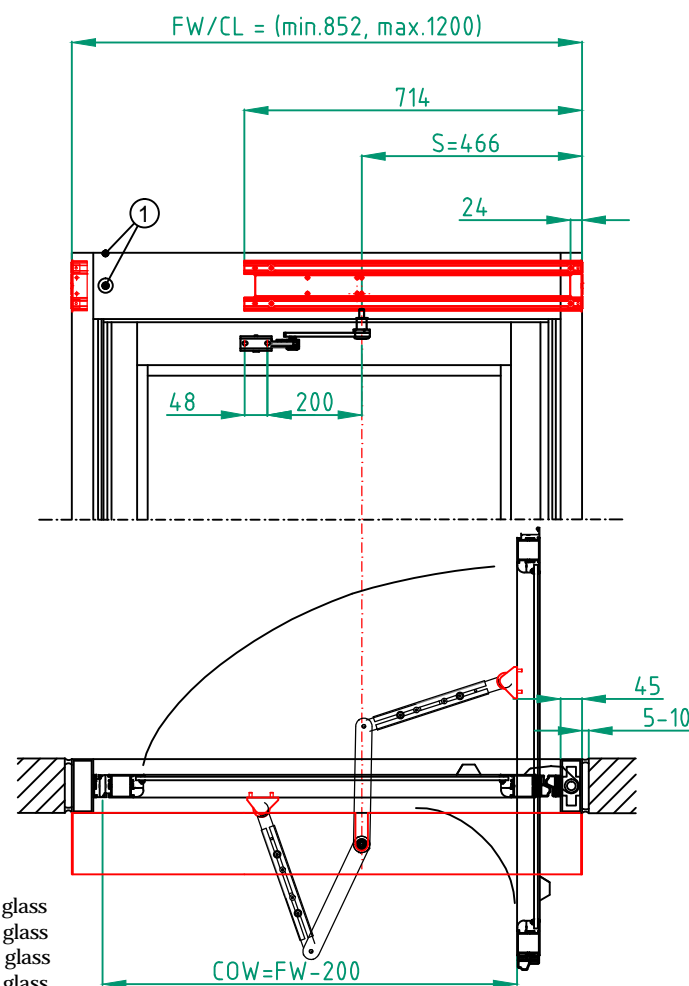
- ☐ Handle outside, 950 mm height
- ☐ Top rail 175 (if door mounted sensor)
- ☐ Midrail 70, MH = mm
- ☐ Midrail 150, MH = mm
- ☐ Bottom rail 201
- ☐ Lock LELME
- ☐ SW100, PUSH
- ☐ SW200, PUSH

Be aware of the operator opening direction, see arrows on drive unit.
 SW100 must have dip switch setting as for PULL arm.

Glass, see layers:

- ☐ 6 mm laminated glass
- ☐ 6 mm tempered glass
- ☐ 8 mm laminated glass
- ☐ 8 mm tempered glass
- ☐ 22 mm insulated glass

① Cable inlet



Customer:

Ref:

Door id:

Date:

Project No:

Sign:

Balance door system Besam SW1000B-L

Arm system PUSH

ASSA ABLOY

9.0

1011810-EI