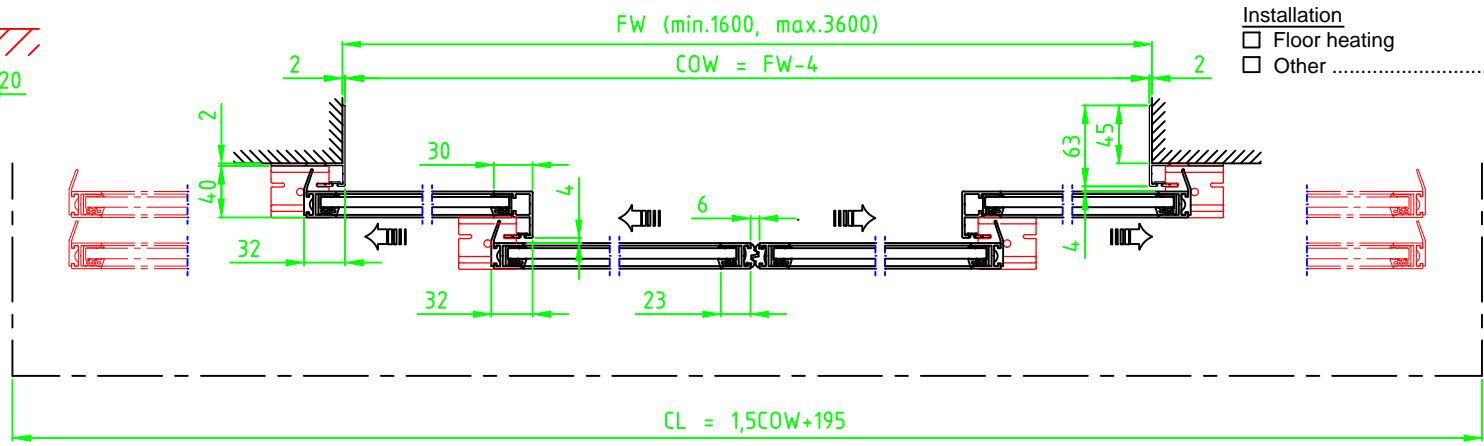
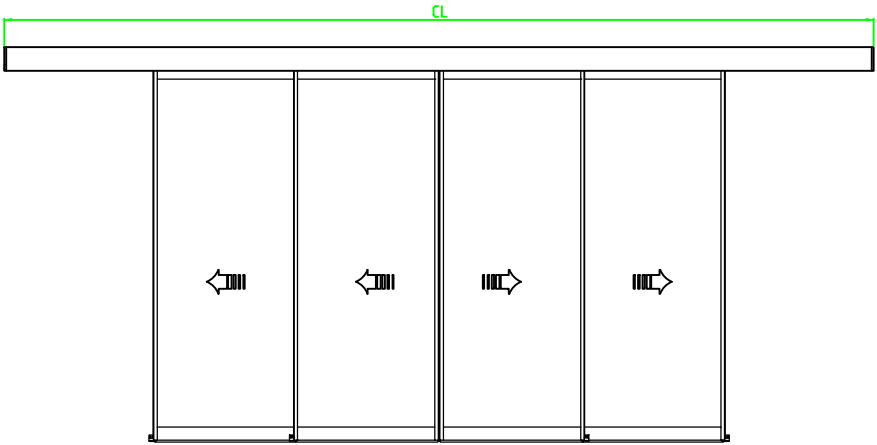
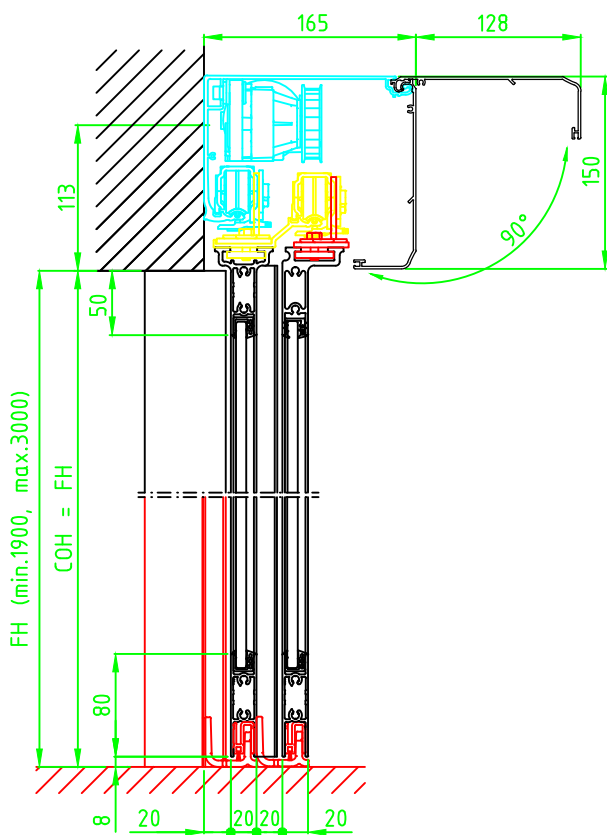


© All rights in and to this material are the sole property of ASSA ABLOY Entrance Systems AB. of the applicable company within ASSA ABLOY Entrance Systems AB. Rights reserved for changes without prior notice. Copying, scanning, alterations or modifications are expressly forbidden without the prior written consent.



STATE WHEN ORDERING

FW = ..... mm  
FH = ..... mm  
COW = ..... mm  
COH = ..... mm  
CL = ..... mm

Surface treatment

☐ Silver anodized  
Special anodized .....  
RAL .....  
Special powder coating .....  
.....

Options see layers:

☐ Alternative F (concrete/brick)  
☐ Alternative U (aluminium/steel)  
☐ Threshold floor guide, L = 1,5FW+58  
☐ TightSeal (floor level difference max. ± 3 mm)

Glass option see drw. 1009030

Glass code: .....

Limitation

If 12 mm glass FW x FH = max. 10,2 m²

Installation

☐ Floor heating  
☐ Other .....

Customer:
Door id:
Project No:

Ref:
Date:
Sign:

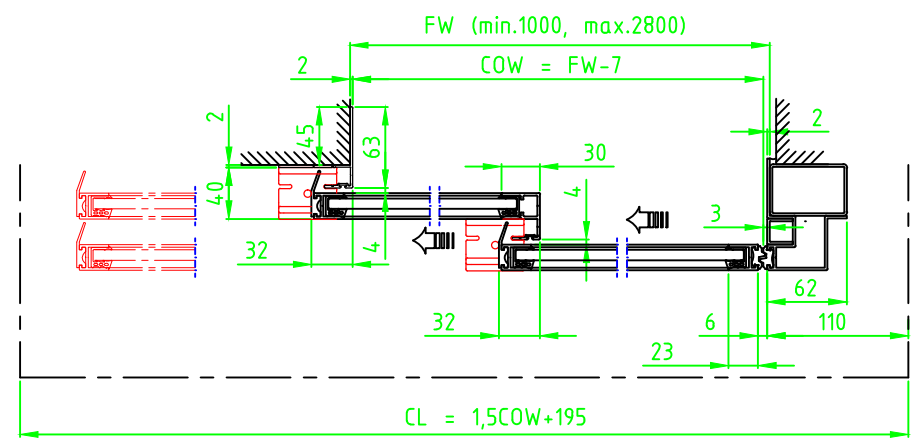
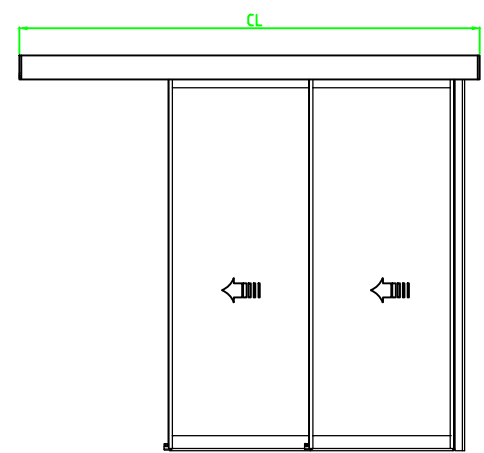
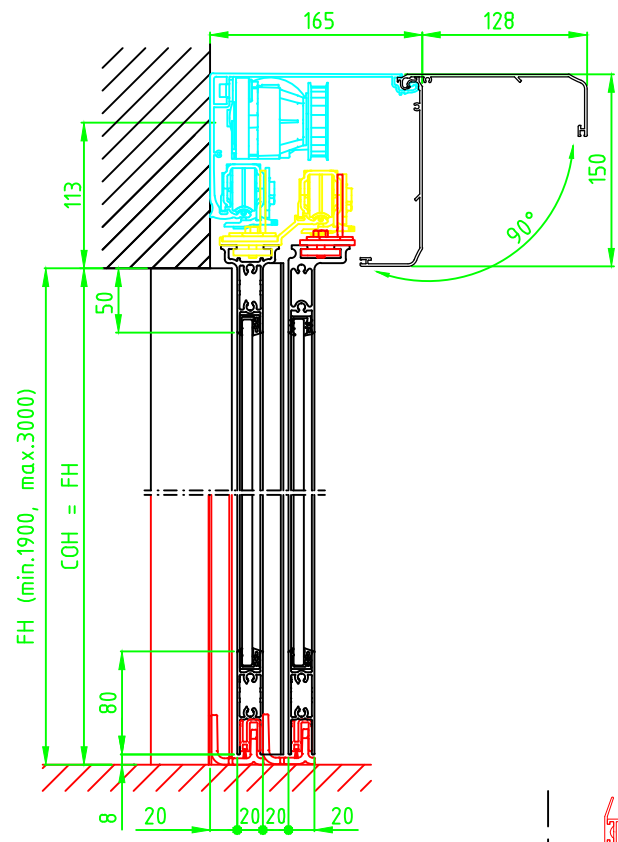
Automatic door system  
Besam ADS Slim telescopic 4 Panel wall mounted bipart  
Art. No. 1009388  
Besam SL500 T


3.0

1009388

© All rights in and to this material are the sole property of ASSA ABLOY Entrance Systems AB. of the applicable company within ASSA ABLOY Entrance Systems AB. Rights reserved for changes without prior notice.  
Copying, scanning, alterations or modifications are expressly forbidden without the prior written consent.



STATE WHEN ORDERING

FW = ..... mm  
FH = ..... mm  
COW = ..... mm  
COH = ..... mm  
CL = ..... mm

Surface treatment

- ☐ Silver anodized
- Special anodized .....
- RAL .....
- Special powder coating .....

Options see layers:

- ☐ Alternative F (concrete/brick)
- ☐ Alternative U (aluminium/steel)
- ☐ Threshold floor guide, L = 1,5FW+27
- ☐ TightSeal (floor level difference max. ± 3 mm)

Glass option see drw. 1009030

Glass code:  
.....

Limitation

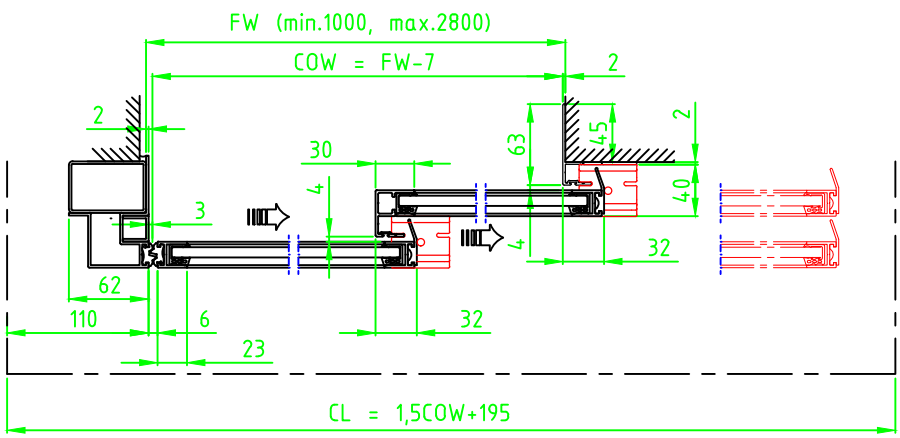
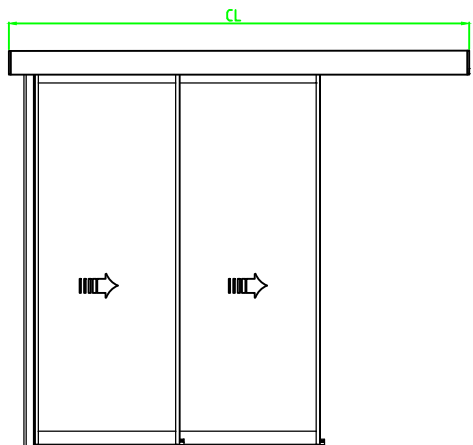
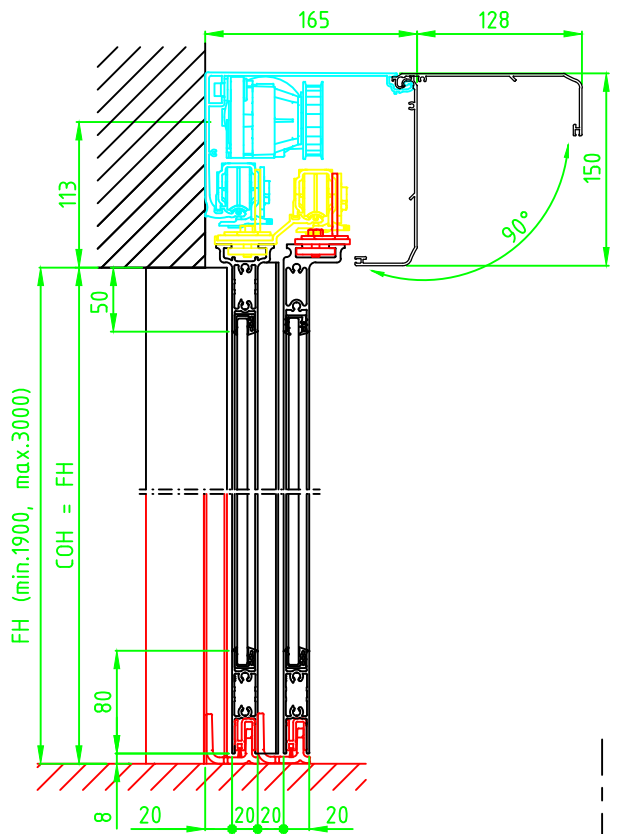
If 8 mm glass FW x FH = max. 7,5 m<sup>2</sup>  
If 10 mm glass FW x FH = max. 6,1 m<sup>2</sup>  
If 12 mm glass FW x FH = max. 5,1 m<sup>2</sup>

Installation

- ☐ Floor heating
- ☐ Other .....

Customer:	Ref:	Automatic door system Besam ADS Slim telescopic 2 Panel wall mounted opening left Art. No. 1009388 Besam SL500 T	
Door id:	Date:		
Project No:	Sign:		
		3.0	1009388

© All rights in and to this material are the sole property of ASSA ABLOY Entrance Systems AB. of the applicable company within ASSA ABLOY Entrance Systems AB. Rights reserved for changes without prior notice.  
Copying, scanning, alterations or modifications are expressly forbidden without the prior written consent



STATE WHEN ORDERING

FW = ..... mm  
FH = ..... mm  
COW = ..... mm  
COH = ..... mm  
CL = ..... mm

Surface treatment

☐ Silver anodized  
☐ Special anodized .....  
RAL .....  
☐ Special powder coating .....  
.....

Options see layers:

- ☐ Alternative F (concrete/brick)
- ☐ Alternative U (aluminium/steel)
- ☐ Threshold floor guide, L = 1,5FW+27
- ☐ TightSeal (floor level difference max. ± 3 mm)

Glass option see drw. 1009030

Glass code: .....

Limitation

If 8 mm glass FW x FH = max. 7,5 m²  
If 10 mm glass FW x FH = max. 6,1 m²  
If 12 mm glass FW x FH = max. 5,1 m²

Installation

☐ Floor heating  
☐ Other .....

Customer: \_\_\_\_\_

Door id: \_\_\_\_\_

Project No: \_\_\_\_\_

Ref: \_\_\_\_\_

Date: \_\_\_\_\_

Sign: \_\_\_\_\_

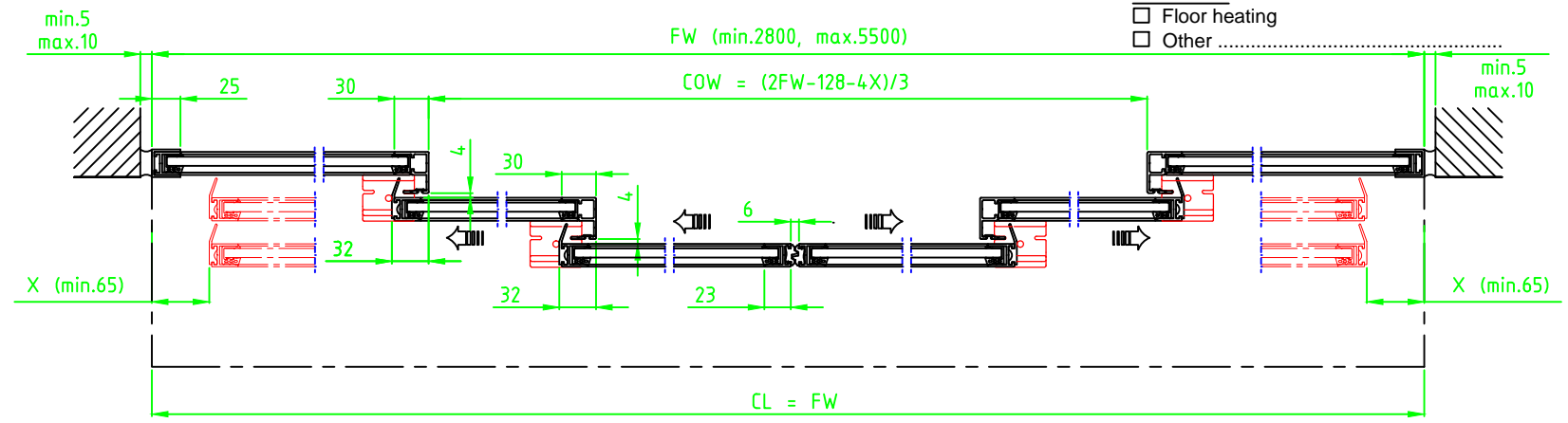
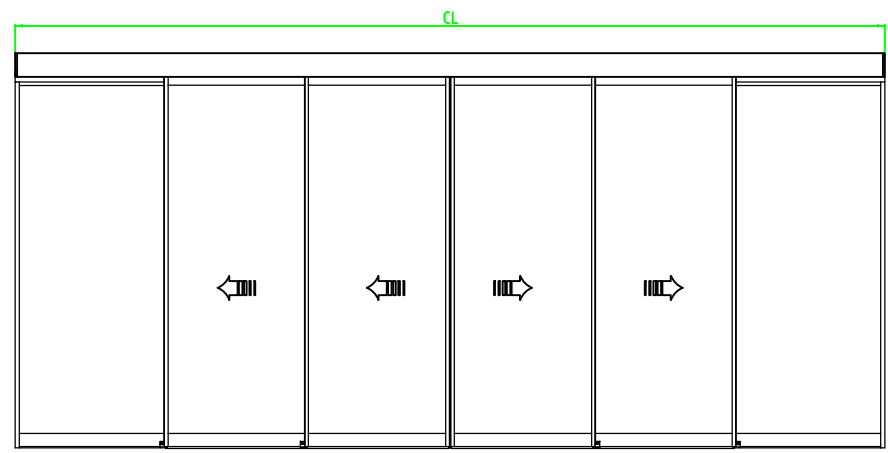
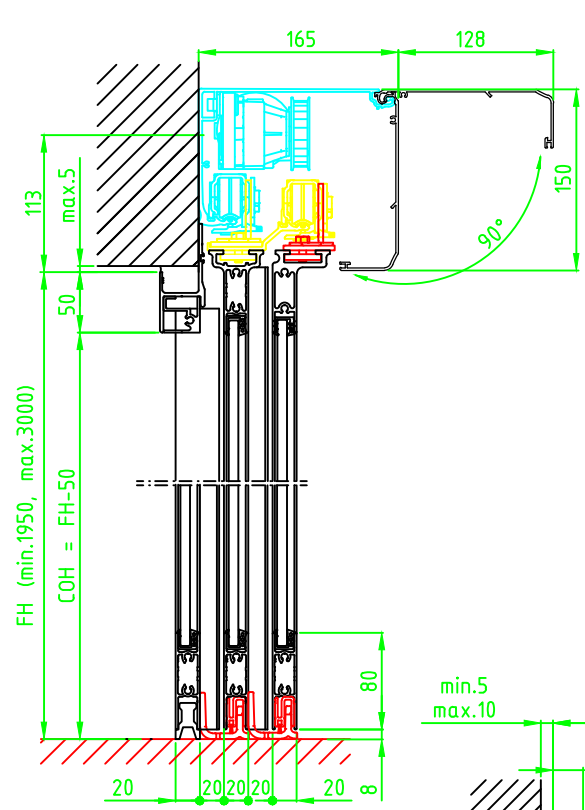
Automatic door system  
Besam ADS Slim telescopic 2 Panel wall mounted opening right  
Art. No. 1009388  
Besam SL500 T


3.0

1009388

© All rights in and to this material are the sole property of ASSA ABLOY Entrance Systems AB. of the applicable company within ASSA ABLOY Entrance Systems AB. Rights reserved for changes without prior notice. Copying, scanning, alterations or modifications are expressly forbidden without the prior written consent



STATE WHEN ORDERING

FW = ..... mm  
FH = ..... mm  
X = ..... mm  
COW = ..... mm  
COH = ..... mm  
CL = ..... mm

Surface treatment

- ☐ Silver anodized
- Special anodized .....
- RAL .....
- Special powder coating .....

Options see layers:

- ☐ Threshold floor guide, L = FW
- ☐ TightSeal (floor level difference max. ± 3 mm)

Glass option see drw. 1009030

Glass code: .....

Limitation

If 12 mm glass FW x FH = max. 15,9 m²

Installation

- ☐ Floor heating
- ☐ Other .....

Customer:
Door id:
Project No:

Ref:
Date:
Sign:

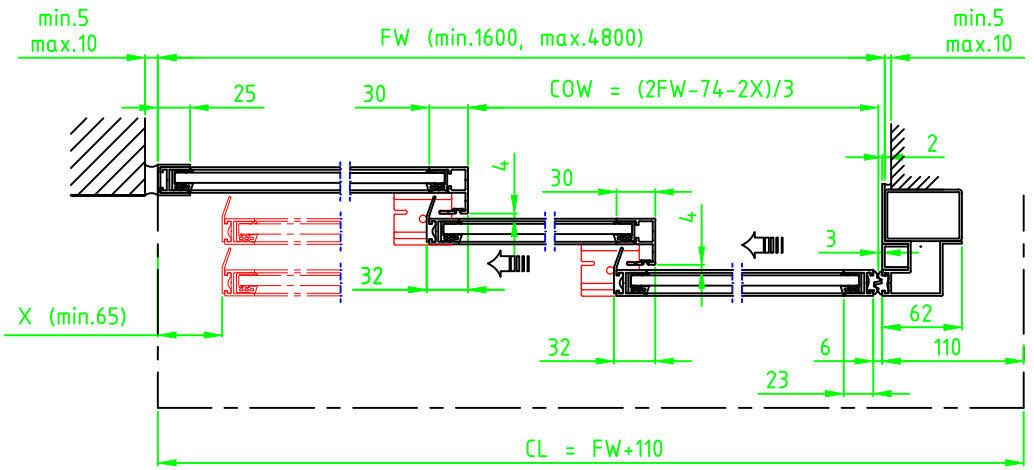
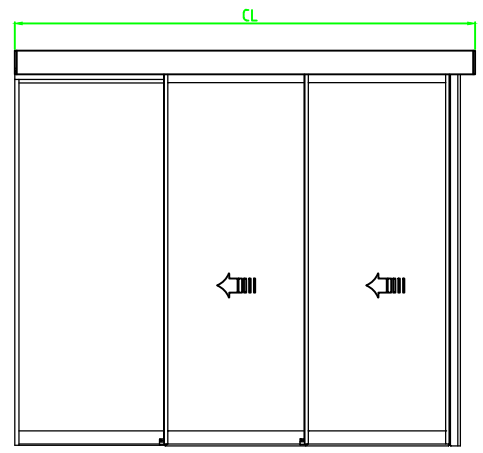
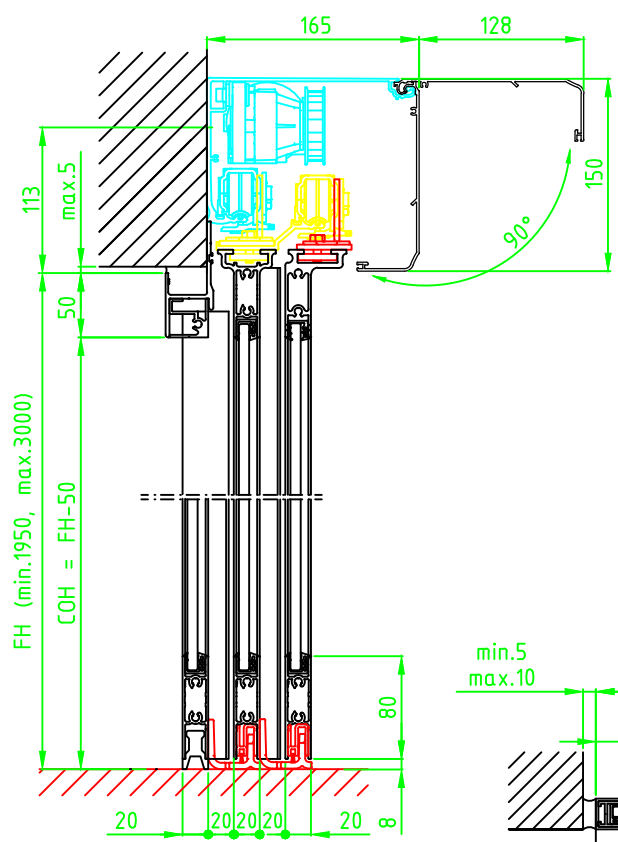
Automatic door system  
Besam ADS Slim telescopic 6 Panel wall mounted  
Art. No. 1009388  
Besam SL500 T


3.0

1009388

© All rights in and to this material are the sole property of ASSA ABLOY Entrance Systems AB. of the applicable company within ASSA ABLOY Entrance Systems AB. Rights reserved for changes without prior notice. Copying, scanning, alterations or modifications are expressly forbidden without the prior written consent.



STATE WHEN ORDERING

FW = ..... mm  
FH = ..... mm  
X = ..... mm  
COW = ..... mm  
COH = ..... mm  
CL = ..... mm

Surface treatment  
☐ Silver anodized  
Special anodized .....  
RAL .....  
Special powder coating .....  
.....

Options see layers:  
☐ Alternative F (concrete/brick)  
☐ Alternative U (aluminium/steel)  
☐ Threshold floor guide, L = FW  
☐ TightSeal (floor level difference max. ± 3 mm)

Glass option see drw. 1009030  
Glass code: .....

Limitation  
If 8 mm glass FW x FH = max. 11,5 m²  
If 10 mm glass FW x FH = max. 9,4 m²  
If 12 mm glass FW x FH = max. 7,9 m²

Installation  
☐ Floor heating  
☐ Other .....

Customer:
Door id:
Project No:

Ref:
Date:
Sign:

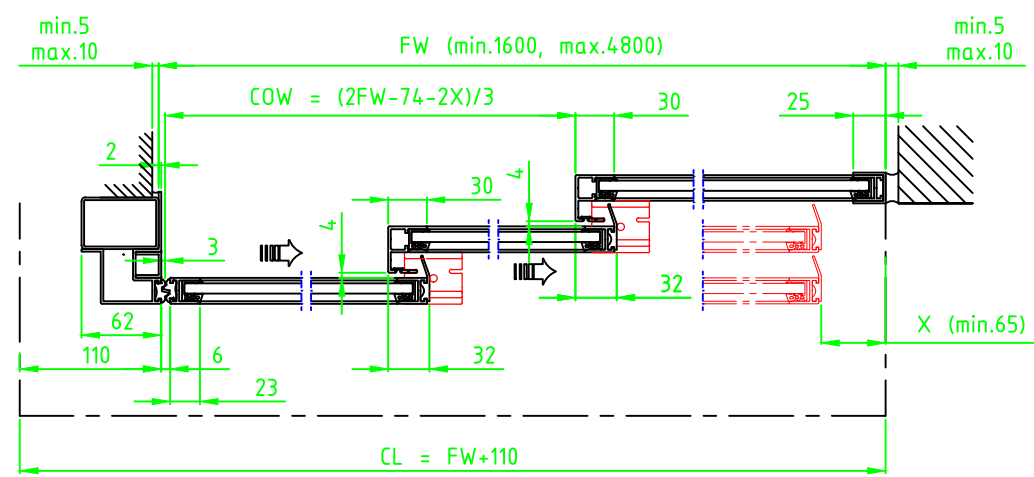
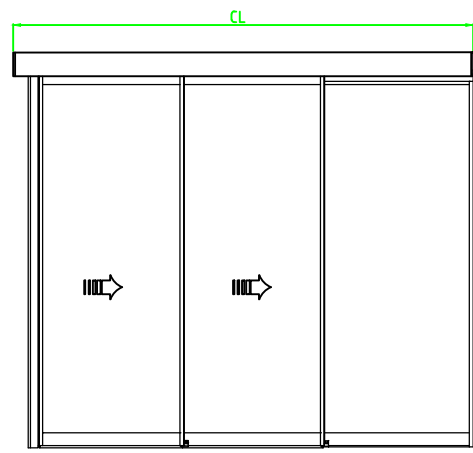
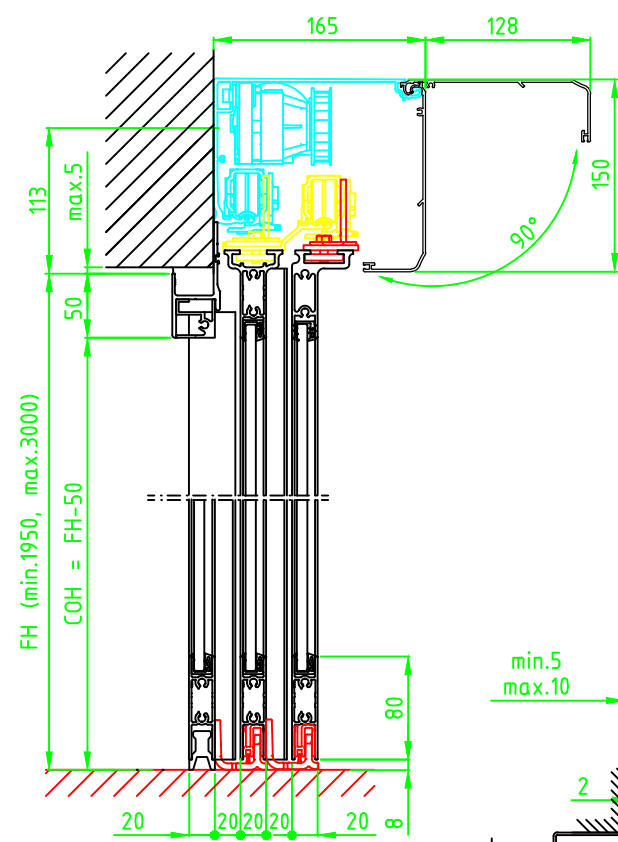
Automatic door system  
Besam ADS Slim telescopic 3 Panel wall mounted opening left  
Art. No. 1009388  
Besam SL500 T


3.0

1009388

© All rights in and to this material are the sole property of ASSA ABLOY Entrance Systems AB. of the applicable company within ASSA ABLOY Entrance Systems AB. Rights reserved for changes without prior notice. Copying, scanning, alterations or modifications are expressly forbidden without the prior written consent.



STATE WHEN ORDERING

FW = ..... mm  
FH = ..... mm  
X = ..... mm  
COW = ..... mm  
COH = ..... mm  
CL = ..... mm

Surface treatment

- ☐ Silver anodized  
☐ Special anodized .....  
☐ RAL .....  
☐ Special powder coating .....  
.....

Options see layers:

- ☐ Alternative F (concrete/brick)  
☐ Alternative U (aluminium/steel)  
☐ Threshold floor guide, L = FW  
☐ TightSeal (floor level difference max. ± 3 mm)

Glass option see drw. 1009030

Glass code:  
.....

Limitation

If 8 mm glass FW x FH = max. 11,5 m<sup>2</sup>  
If 10 mm glass FW x FH = max. 9,4 m<sup>2</sup>  
If 12 mm glass FW x FH = max. 7,9 m<sup>2</sup>

Installation

- ☐ Floor heating  
☐ Other .....

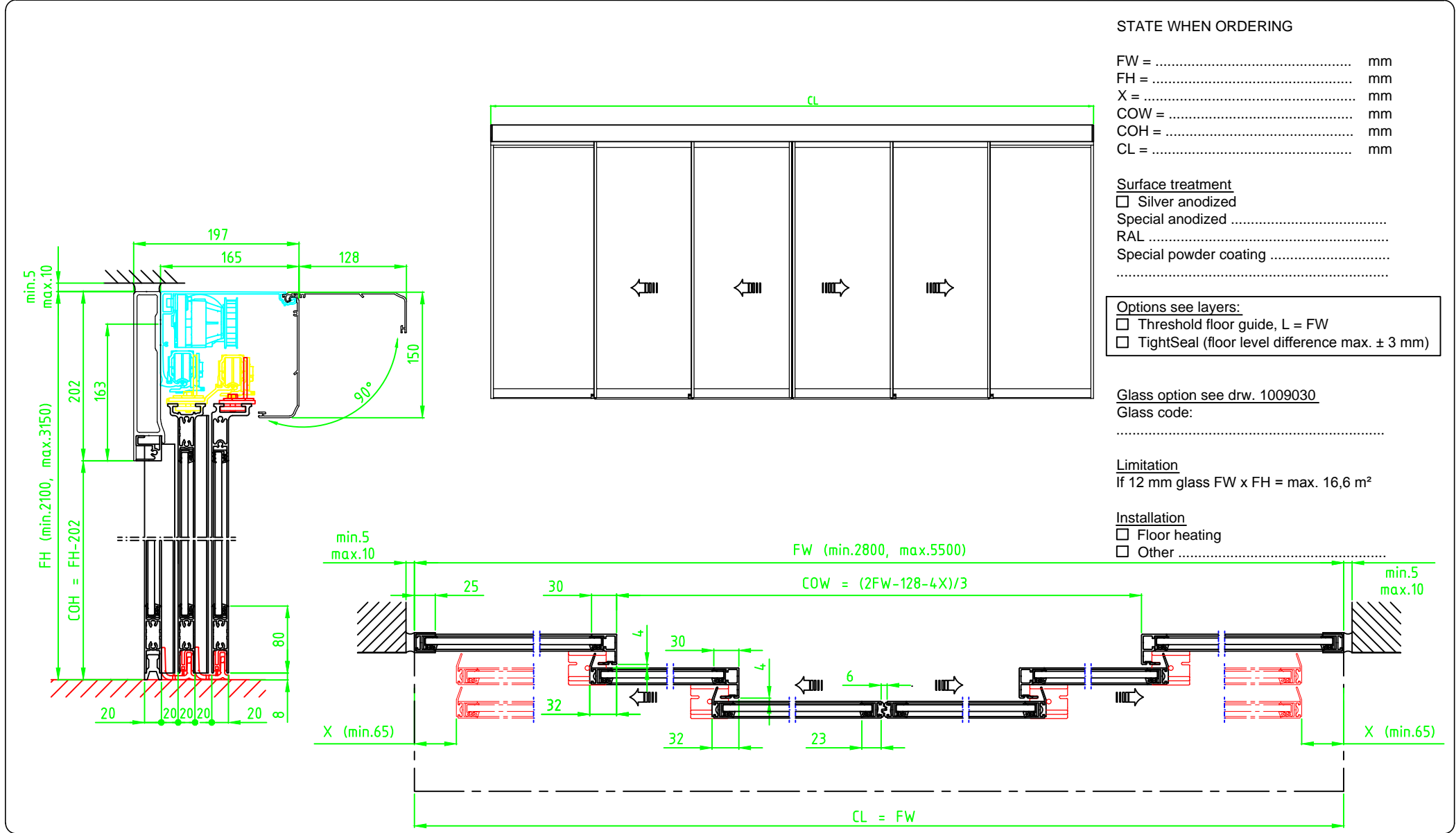
Customer: \_\_\_\_\_  
Door id: \_\_\_\_\_  
Project No: \_\_\_\_\_

Ref: \_\_\_\_\_  
Date: \_\_\_\_\_  
Sign: \_\_\_\_\_

Automatic door system  
Besam ADS Slim telescopic 3 Panel wall mounted opening right  
Art. No. 1009388  
Besam SL500 T

3.0

1009388



STATE WHEN ORDERING

FW = ..... mm  
FH = ..... mm  
X = ..... mm  
COW = ..... mm  
COH = ..... mm  
CL = ..... mm

Surface treatment

- ☐ Silver anodized
- Special anodized .....
- RAL .....
- Special powder coating .....

Options see layers:

- ☐ Threshold floor guide, L = FW
- ☐ TightSeal (floor level difference max. ± 3 mm)

Glass option see drw. 1009030

Glass code: .....

Limitation

If 12 mm glass FW x FH = max. 16,6 m²

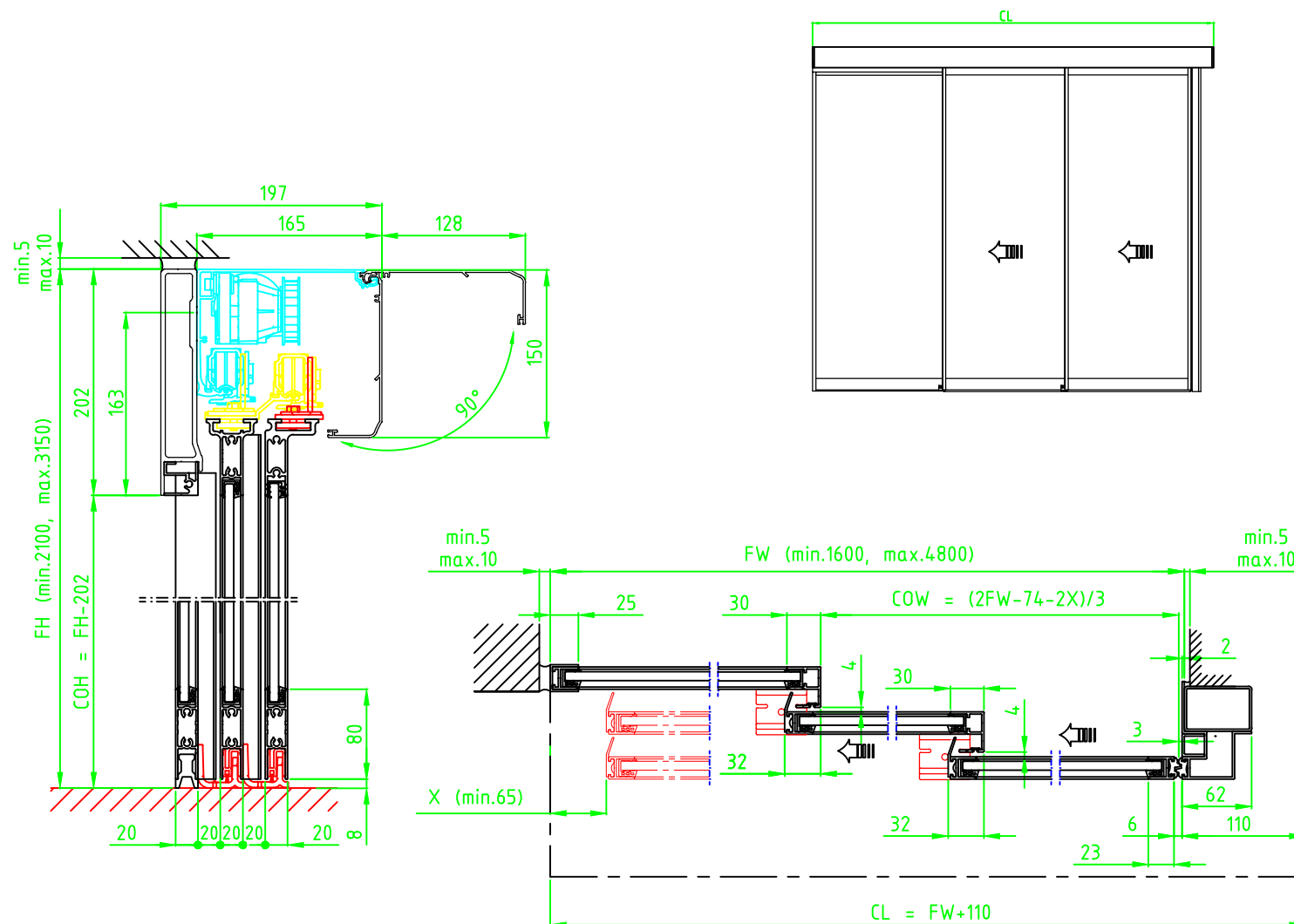
Installation

- ☐ Floor heating
- ☐ Other .....

Customer:	Ref:	Automatic door system Besam ADS Slim telescopic 6 Panel beam mounted Art. No. 1009388 Besam SL500 T	<b>besam</b> <b>ASSA ABLOY</b>
Door id:	Date:		
Project No:	Sign:		
		3.0	1009388

☐ Floor heating

☐ Other .....





☐ Floor heating

☐ Other .....

