

STATE WHEN ORDERING

FW = mm
FH = mm
COW = mm
COH = mm
CL = mm

Surface treatment

☐ Silver anodized
☐ Special anodized
RAL
☐ Special powder coating
.....

Options see layers:

☐ Alternative F (concrete/brick)
☐ Alternative U (aluminium/steel)
☐ TightSeal (floor level difference max. ± 3 mm)

Glass option see drw. 1009030

Glass code:
.....

Installation

☐ Floor heating
☐ Other

Customer:

Ref:

Door id:

Date:

Project No:

Sign:

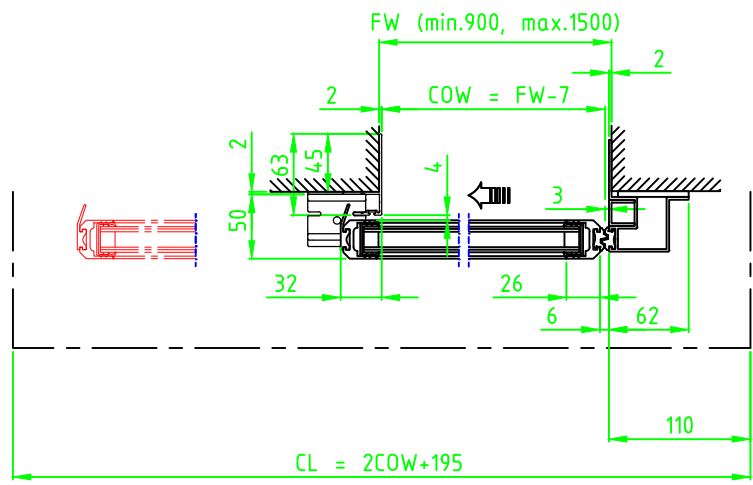
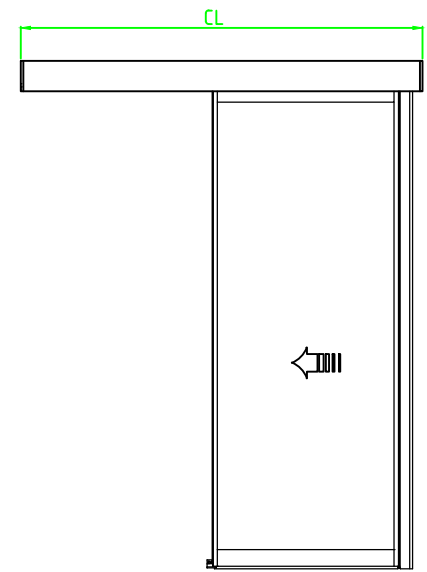
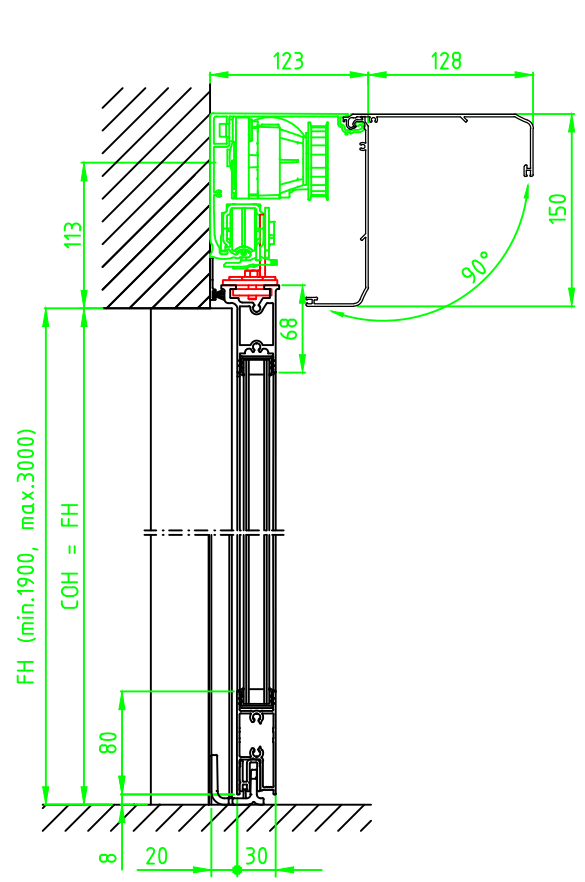
Automatic door system
Besam ADS Slim Thermo 2 Panel wall mounted bipart
Art. No. 1009391
Besam SL500

ASSA ABLOY

2.0

1009391-EI

© All rights in and to this material are the sole property of ASSA ABLOY Entrance Systems AB. of the applicable company within ASSA ABLOY Entrance Systems AB. Rights reserved for changes without prior notice.
Copying, scanning, alterations or modifications are expressly forbidden without the prior written consent



STATE WHEN ORDERING

FW = mm
FH = mm
COW = mm
COH = mm
CL = mm

Surface treatment

- ☐ Silver anodized
- Special anodized
- RAL
- Special powder coating

Options see layers:

- ☐ Alternative F (concrete/brick)
- ☐ Alternative U (aluminium/steel)
- ☐ TightSeal (floor level difference max. ± 3 mm)

Glass option see drw. 1009030

Glass code:

Installation

- ☐ Floor heating
- ☐ Other

Customer: _____

Door id: _____

Project No: _____

Ref: _____

Date: _____

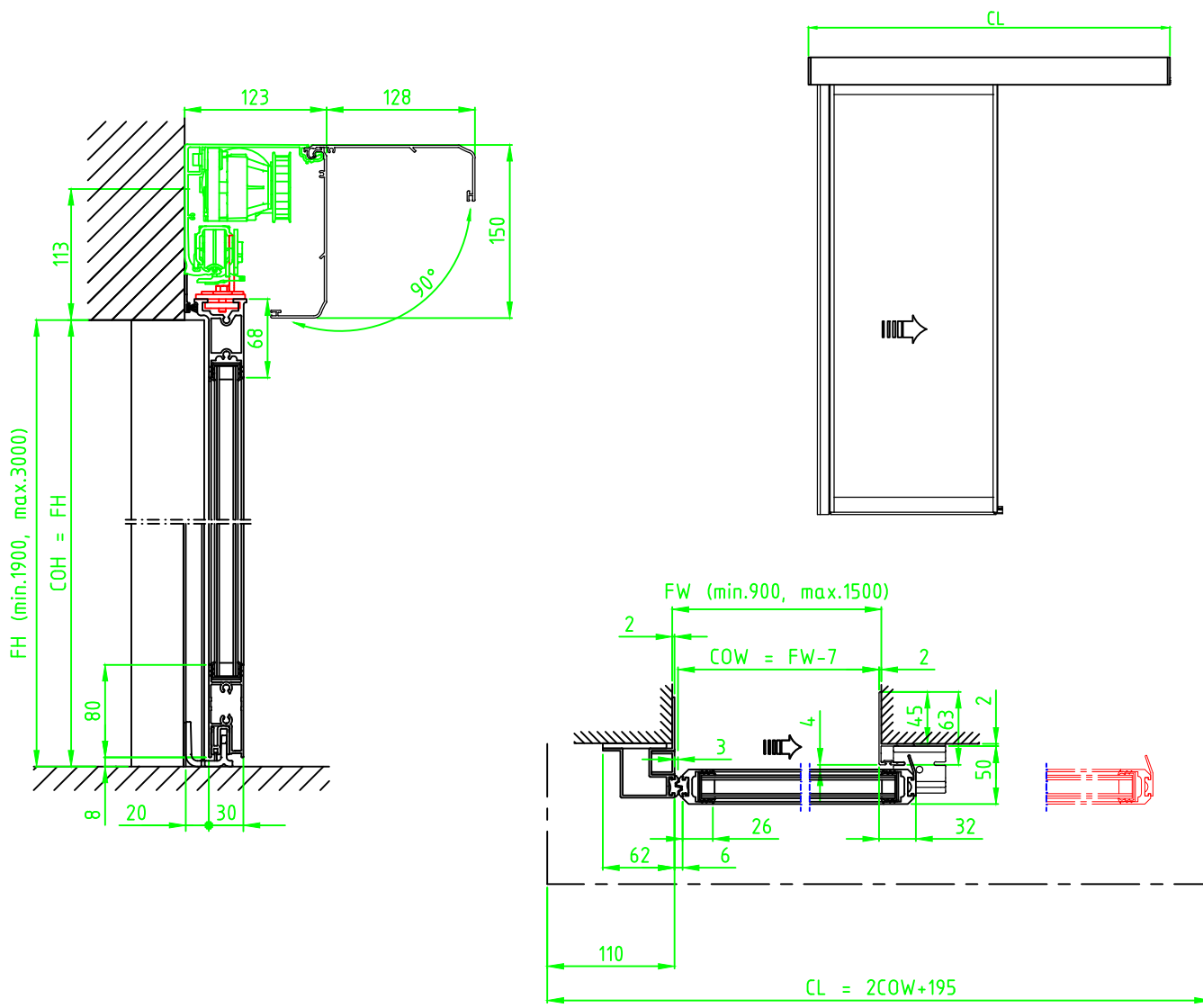
Sign: _____

Automatic door system
Besam ADS Slim Thermo 1 Panel wall mounted opening left
Art. No. 1009391
Besam SL500

ASSA ABLOY

2.0 1009391-EI

© All rights in and to this material are the sole property of ASSA ABLOY Entrance Systems AB. of the applicable company within ASSA ABLOY Entrance Systems AB. Rights reserved for changes without prior notice.
Copying, scanning, alterations or modifications are expressly forbidden without the prior written consent.



STATE WHEN ORDERING

FW = mm
FH = mm
COW = mm
COH = mm
CL = mm

Surface treatment
☐ Silver anodized
Special anodized
RAL
Special powder coating
.....

Options see layers:
☐ Alternative F (concrete/brick)
☐ Alternative U (aluminium/steel)
☐ TightSeal (floor level difference max. ± 3 mm)

Glass option see drw. 1009030
Glass code:
.....

Installation
☐ Floor heating
☐ Other
.....

Customer: _____
Door id: _____
Project No: _____

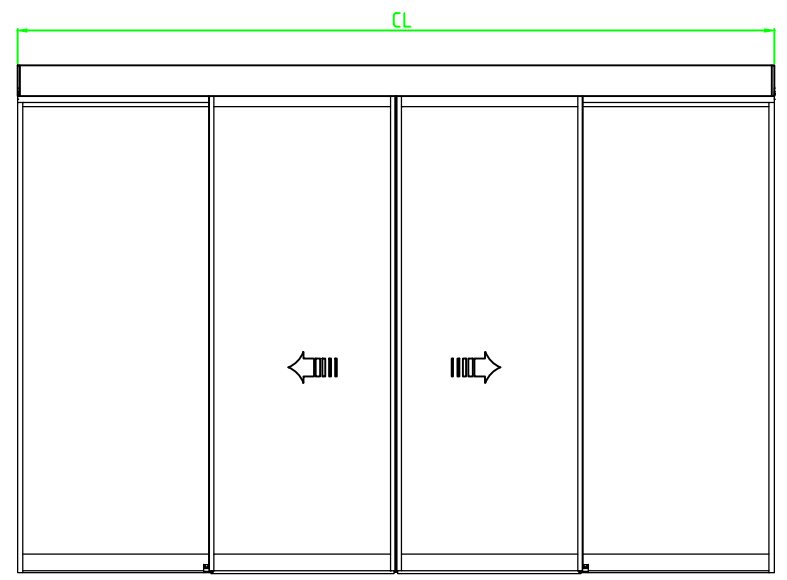
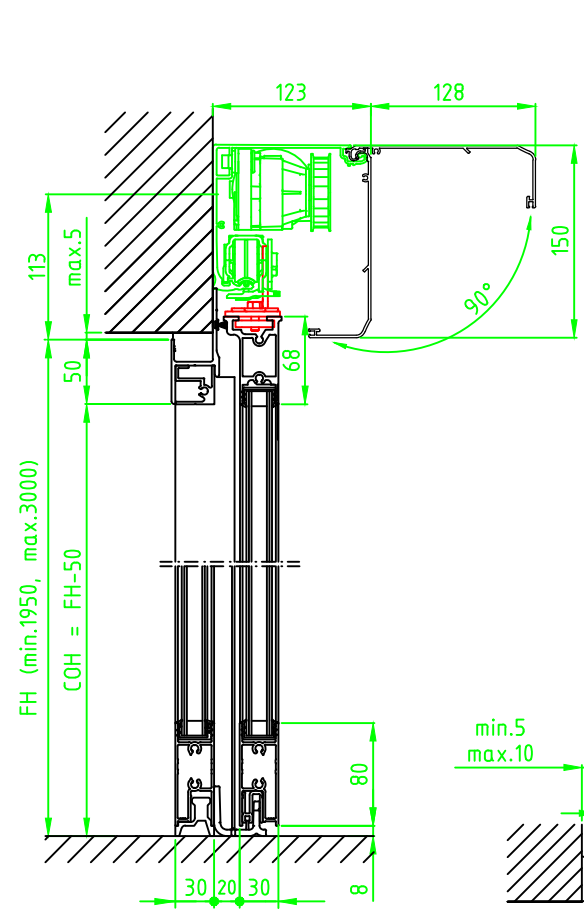
Ref: _____
Date: _____
Sign: _____

Automatic door system
Besam ADS Slim Thermo 1 Panel wall mounted opening right
Art. No. 1009391
Besam SL500

ASSA ABLOY

2.01009391-EI

© All rights in and to this material are the sole property of ASSA ABLOY Entrance Systems AB. of the applicable company within ASSA ABLOY Entrance Systems AB. Rights reserved for changes without prior notice.
Copying, scanning, alterations or modifications are expressly forbidden without the prior written consent.



STATE WHEN ORDERING

FW = mm
FH = mm
X = mm
COW = mm
COH = mm
CL = mm

Surface treatment

- ☐ Silver anodized
- ☐ Special anodized
- ☐ RAL
- ☐ Special powder coating

Options see layers:

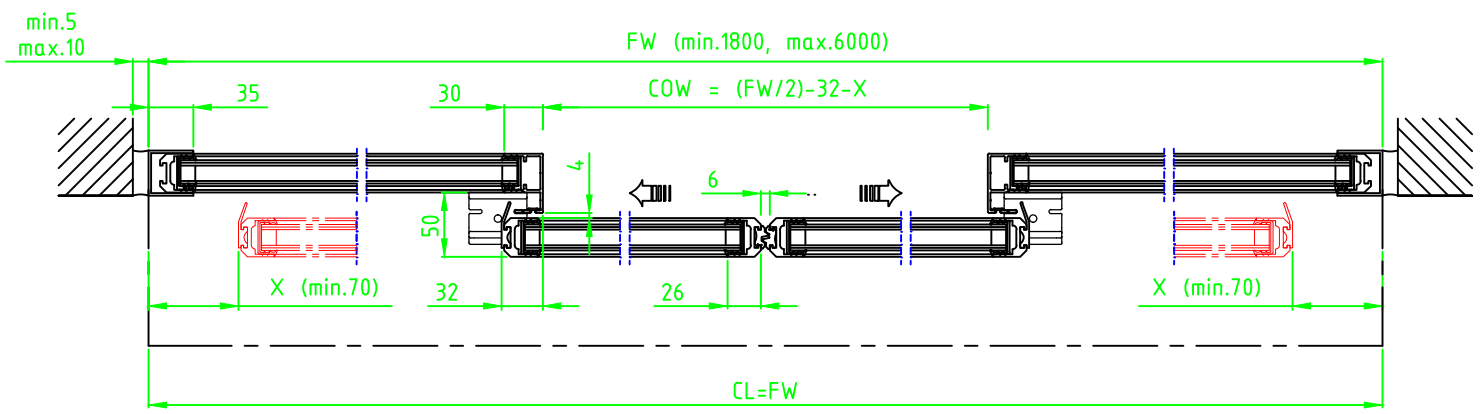
- ☐ TightSeal (floor level difference max. ± 3 mm)

Glass option see drw. 1009030

Glass code:
.....

Installation

- ☐ Floor heating
- ☐ Other



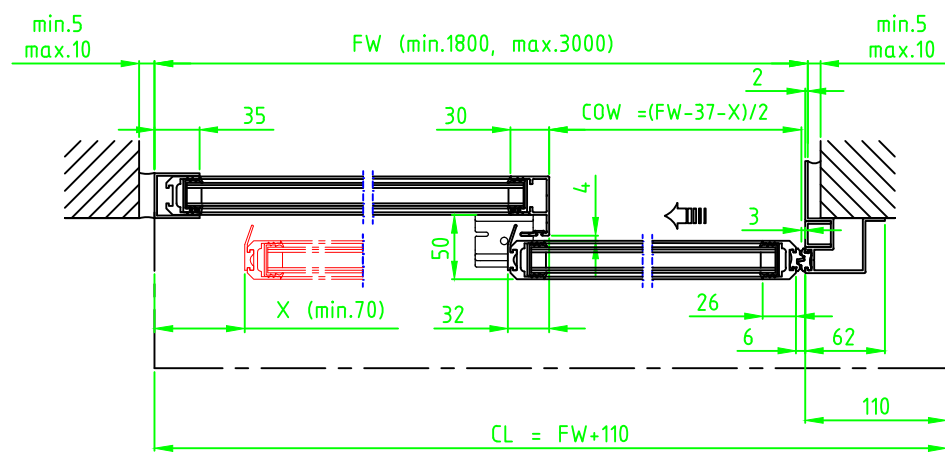
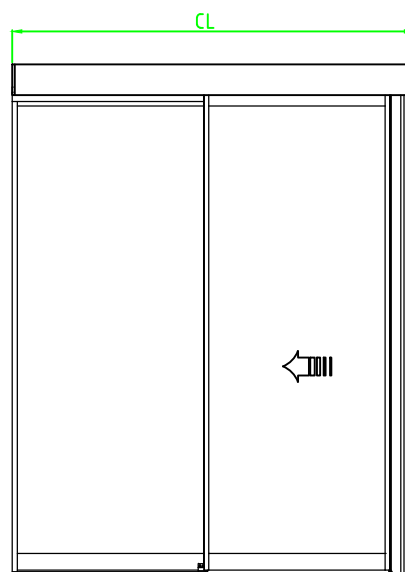
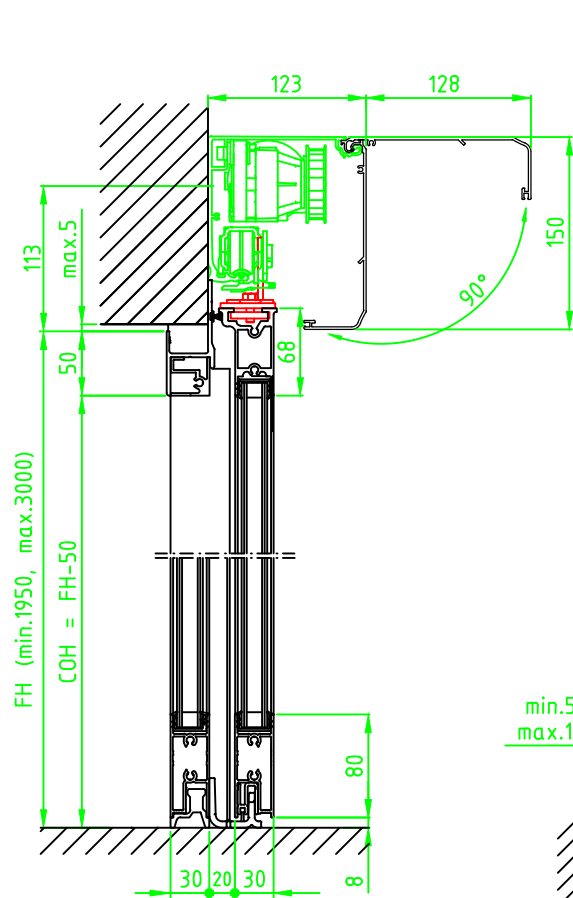
Customer: _____
Door id: _____
Project No: _____

Ref: _____
Date: _____
Sign: _____

Automatic door system
Besam ADS Slim Thermo 4 Panel wall mounted
Art. No. 1009391
Besam SL500

ASSA ABLOY
2.0 1009391-EI

© All rights in and to this material are the sole property of ASSA ABLOY Entrance Systems AB. of the applicable company within ASSA ABLOY Entrance Systems AB. Rights reserved for changes without prior notice. Copying, scanning, alterations or modifications are expressly forbidden without the prior written consent.



STATE WHEN ORDERING

FW = mm
FH = mm
X = mm
COW = mm
COH = mm
CL = mm

Surface treatment

- ☐ Silver anodized
- Special anodized
- RAL
- Special powder coating

Options see layers:

- ☐ Alternative F (concrete/brick)
- ☐ Alternative U (aluminium/steel)
- ☐ TightSeal (floor level difference max. ± 3 mm)

Glass option see drw. 1009030

Glass code:

Installation

- ☐ Floor heating
- ☐ Other

Customer: _____

Door id: _____

Project No: _____

Ref: _____

Date: _____

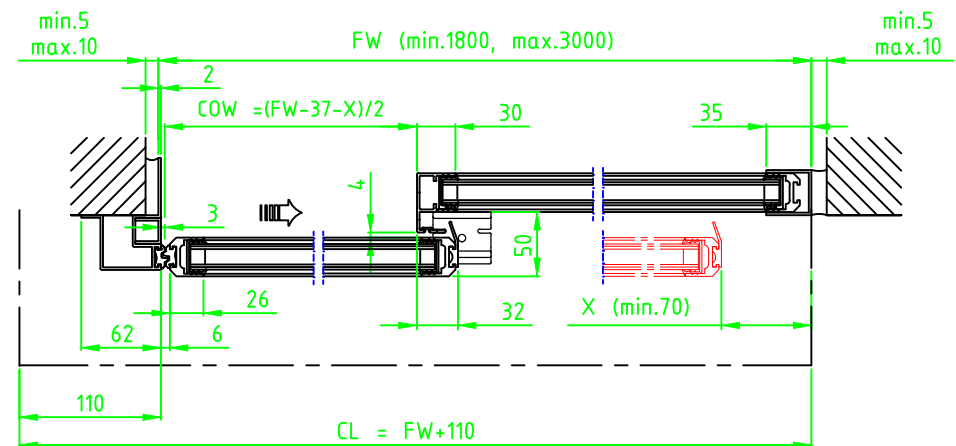
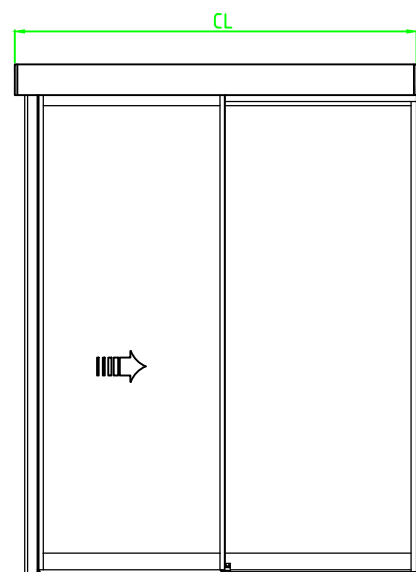
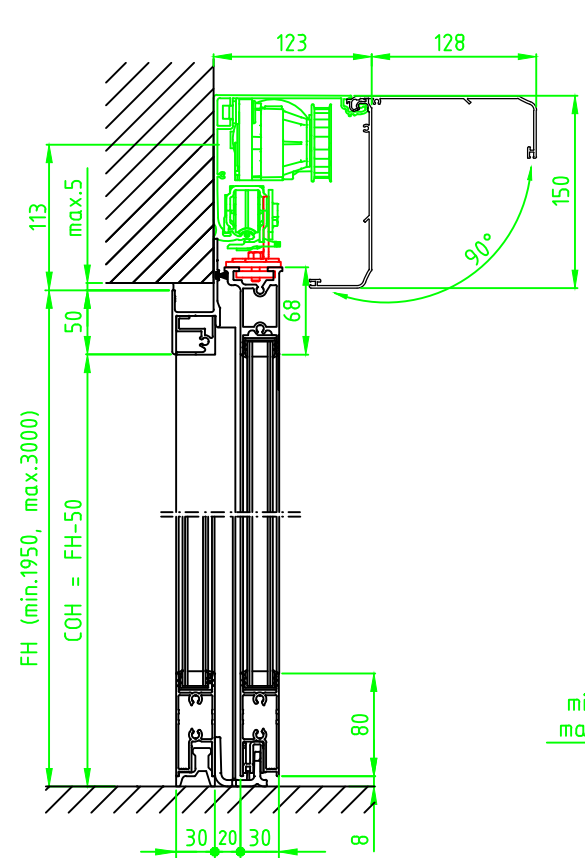
Sign: _____

Automatic door system
Besam ADS Slim Thermo 2 Panel wall mounted opening left
Art. No. 1009391
Besam SL500

ASSA ABLOY

2.0 1009391-EI

© All rights in and to this material are the sole property of ASSA ABLOY Entrance Systems AB. of the applicable company within ASSA ABLOY Entrance Systems AB. Rights reserved for changes without prior notice. Copying, scanning, alterations or modifications are expressly forbidden without the prior written consent.



STATE WHEN ORDERING

FW = mm
FH = mm
X = mm
COW = mm
COH = mm
CL = mm

Surface treatment

- ☐ Silver anodized
Special anodized
RAL
Special powder coating
.....

Options see layers:

- ☐ Alternative F (concrete/brick)
☐ Alternative U (aluminium/steel)
☐ TightSeal (floor level difference max. ± 3 mm)

Glass option see drw. 1009030

Glass code:

Installation

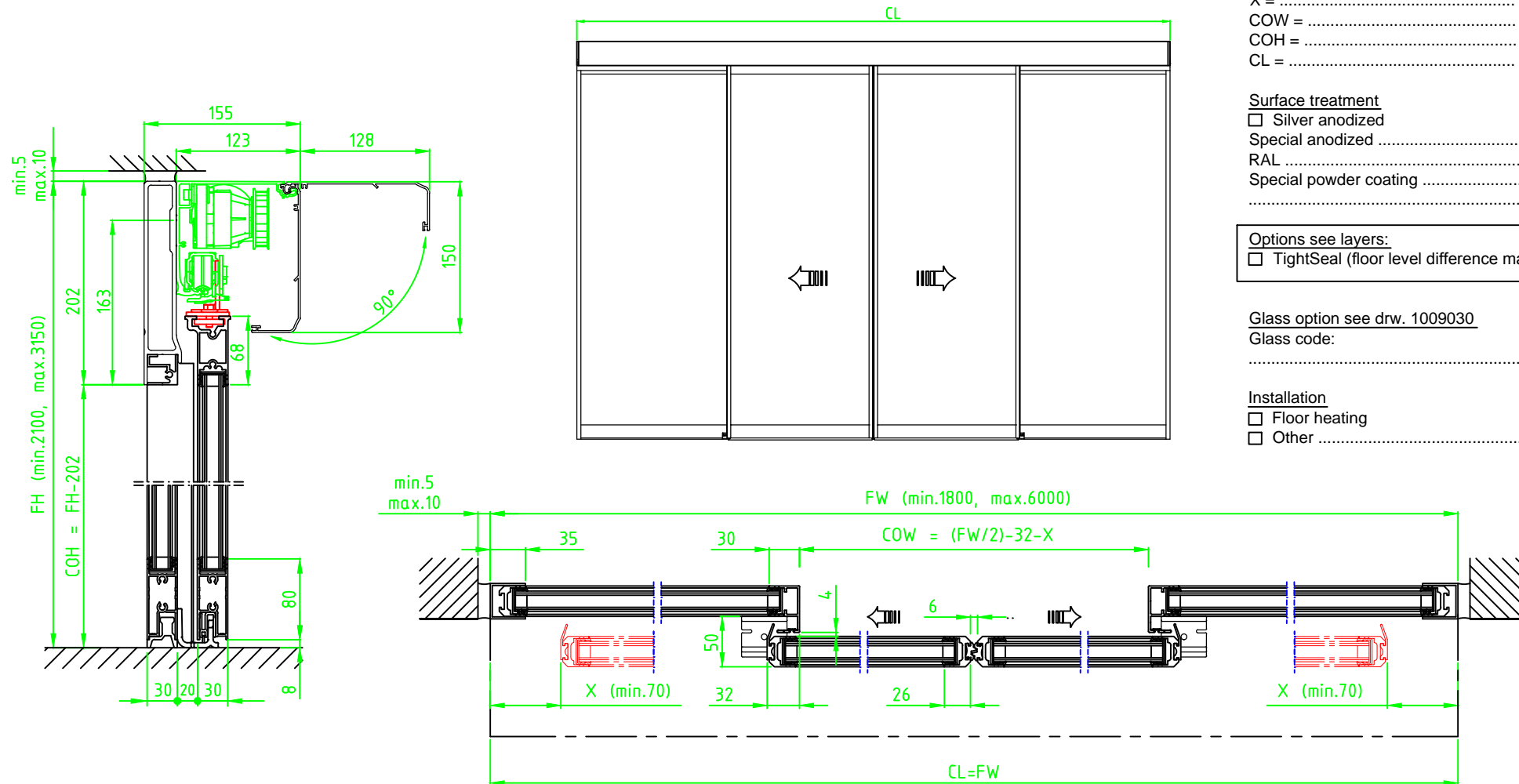
- ☐ Floor heating
☐ Other

Customer:	Ref:
Door id:	Date:
Project No:	Sign:

Automatic door system
Besam ADS Slim Thermo 2 Panel wall mounted opening right
Art. No. 1009391
Besam SL500

ASSA ABLOY

2.0 1009391-EI



STATE WHEN ORDERING

FW = mm
FH = mm
X = mm
COW = mm
COH = mm
CL = mm

Surface treatment

☐ Silver anodized
Special anodized
RAL
Special powder coating
.....

Options see layers:

☐ TightSeal (floor level difference max. ± 3 mm)

Glass option see drw. 1009030

Glass code:
.....

Installation

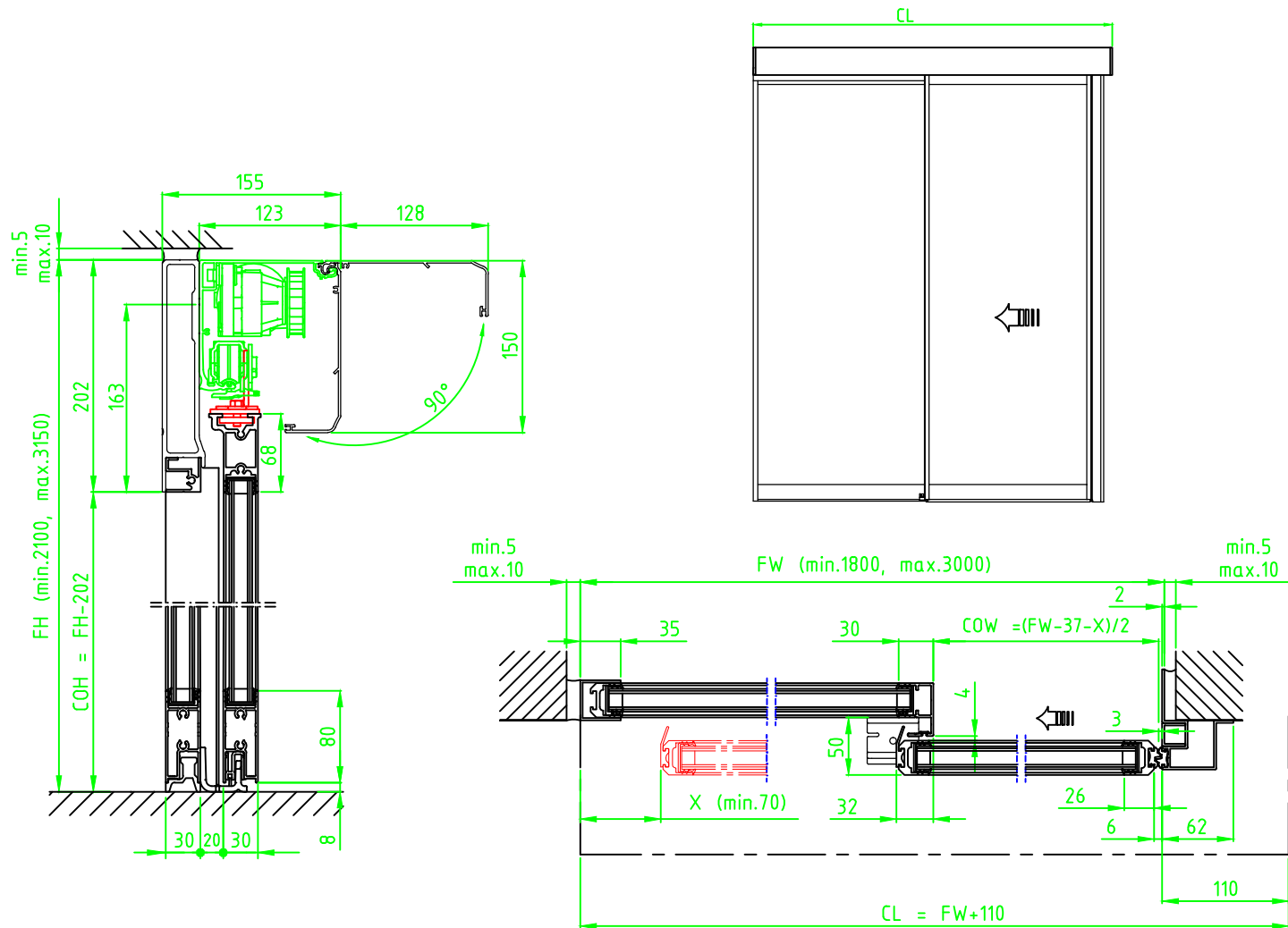
☐ Floor heating
☐ Other

Customer:
Door id:
Project No:

Ref:
Date:
Sign:

Automatic door system
Besam ADS Slim Thermo 4 Panel beam mounted
Art. No. 1009391
Besam SL500

ASSA ABLOY
2.0 1009391-EI



STATE WHEN ORDERING

FW = mm
FH = mm
X = mm
COW = mm
COH = mm
CL = mm

Surface treatment

☐ Silver anodized
Special anodized
RAL
Special powder coating

Options see layers:

☐ Alternative F (concrete/brick)
☐ Alternative U (aluminium/steel)
☐ TightSeal (floor level difference max. ± 3 mm)

Glass option see drw. 1009030

Glass code:

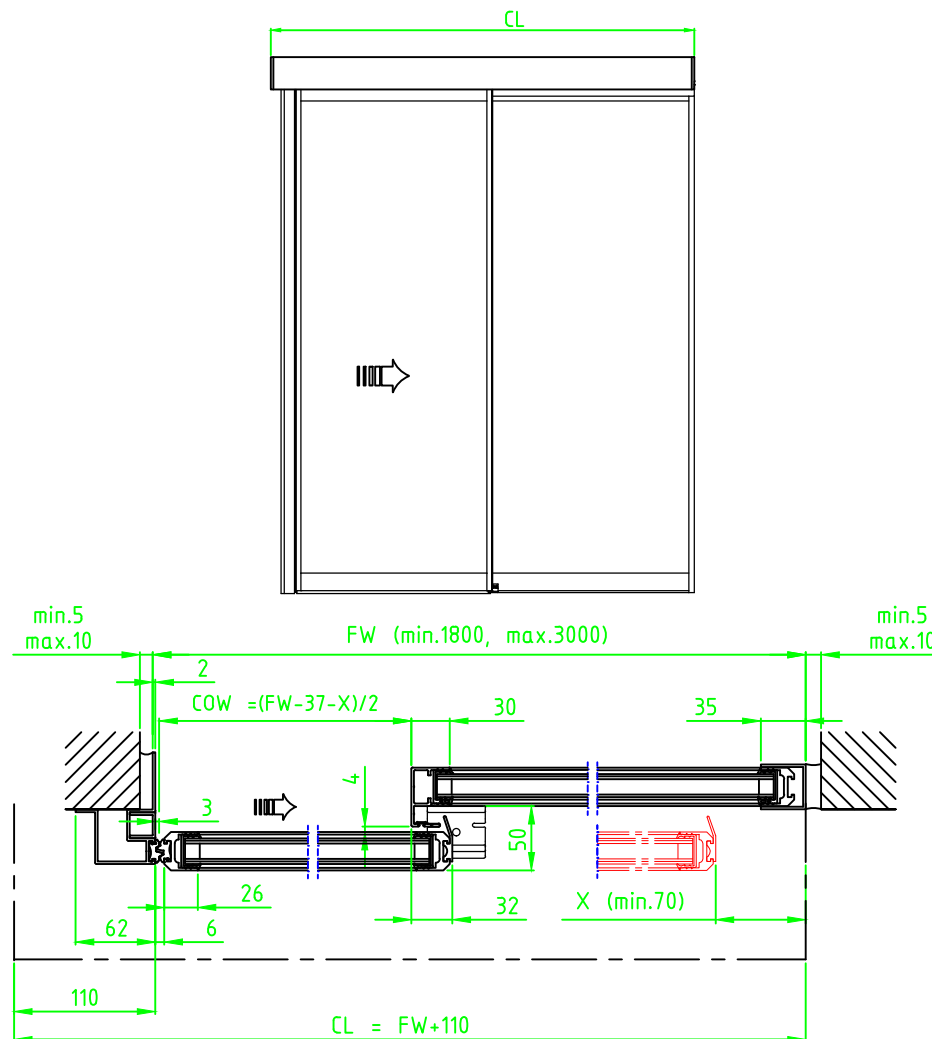
Installation

☐ Floor heating
☐ Other

Customer:	Ref:	Automatic door system Besam ADS Slim Thermo 2 Panel beam mounted opening left Art. No. 1009391 Besam SL500
Door id:	Date:	
Project No:	Sign:	

ASSA ABLOY

2.0 1009391-EI



FW = mm
FH = mm
X = mm
COW = mm
COH = mm
CL = mm

☐ Silver anodized
Special anodized
RAL
Special powder coating

☐ Alternative F (concrete/brick)
☐ Alternative U (aluminium/steel)
☐ TightSeal (floor level difference max. ± 3 mm)

Glass code: _____

☐ Floor heating
☐ Other

Customer:	
Door id:	
Project No:	

Ref: _____

Date: _____

Sign: _____

Automatic door system
Besam ADS Slim Thermo 2 Panel beam mounted opening right
Art. No. 1009391
Besam SL500

ASSA ABLOY

2.0

1009391-EI